

Cor triatriatum dexter in children: Literature review and case report

Afksendiyos Kalangos, MD,^a Nataliia Shatelen, MD,^b Vitaly Demyanchuk, MD,^b Nataliia Ruban, MD,^b Panagiotis Sfyridis, MD,^a and Borys Todurov, MD,^b Athens, Greece and Kiev, Ukraine

From ^aIaso Children's Hospital, Athens, Greece; and ^bHeart Institute Ministry of Health of Ukraine, Kiev, Ukraine.

Disclosures: The authors reported no conflicts of interest.

The *Journal* policy requires editors and reviewers to disclose conflicts of interest and to decline handling or reviewing manuscripts for which they may have a conflict of interest. The editors and reviewers of this article have no conflicts of interest.

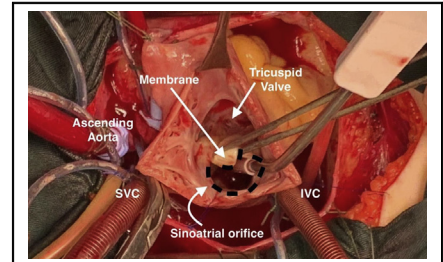
Received for publication Aug 8, 2020; revisions received Aug 8, 2020; accepted for publication Aug 11, 2020. Address for reprints: Afksendiyos Kalangos, MD, Clinic for Pediatric and Congenital Heart Surgery, Iaso Children's Hospital, Kifisias Ave 37-39, 15123 Marousi, Athens, Greece (E-mail: a.kalangos@gmail.com).

JTCVS Techniques 2020; ■:1-5

2666-2507

Copyright © 2020 The Authors. Published by Elsevier Inc. on behalf of The American Association for Thoracic Surgery. This is an open access article under the CC BY-NC-ND license (<http://creativecommons.org/licenses/by-nc-nd/4.0/>).

<https://doi.org/10.1016/j.xjtc.2020.08.024>



Intraoperative photograph of cor triatriatum dexter through right atriotomy.

CENTRAL MESSAGE

Cor triatriatum dexter is a rare congenital defect. Early cyanosis, Budd–Chiari syndrome, and progressive dyspnea are the most frequent symptoms. Membrane resection is indicated for symptomatic patients.

See Commentary on page XXX.

▶ Video clip is available online.

Cor triatriatum dexter (CTD) is one of the rarest congenital cardiac malformations in which there is an abnormal septation of the right atrium (RA) due to the failure of regression of the embryonic right-sided sinus venosus valve.¹ We present our experience regarding a young patient with CTD associated with severe tricuspid regurgitation and review the 13 pediatric cases of CTD previously reported in the literature who underwent surgery (Table 1).¹⁻¹² Informed consent was received for our patient.

A female child was initially seen at our institution at the age of 5 years of age because of frequent episodes of palpitation on exertion. Her electrocardiogram exhibited a normal sinus rhythm with a heart rate of 100 beats/min. Peripheral arterial oxygen saturation was normal (99%). Transthoracic echocardiography (TTE) detected the presence of a wide unrestrictive membrane in an enlarged RA and revealed mild-to-moderate tricuspid regurgitation with no evidence of Ebstein disease or any intracardiac shunting.

At regular clinical examinations, the patient began demonstrating progressive dyspnea, palpitations, and fatigue on moderate exertion. Her latest TTE control, at the age of 9 years, confirmed the presence of this wide membrane in the RA, which was protruding toward the tricuspid valve (TV) during diastole and also revealed severe central regurgitation during systole (Video 1).

At surgery, the RA was opened and a nonobstructive membrane extending across the RA—which was dividing it into 2 chambers, with both caval veins and the coronary sinus on one side and the TV and RA appendage on the other—was exposed (Figure 1). This membrane, which was completely covering the TV leaflets, was carefully resected starting from the upper and lower parts of its anterior unobstructed sinoatrial orifice. After resection, the TV was exposed and its analysis confirmed the suspicion of annular dilatation as well as the presence of a retracted fibrotic septal leaflet with limited mobility. Tricuspid annuloplasty with a Carpentier Edwards tricuspid ring (Edwards Lifesciences, Irvine, Calif) size 28, and a stitch closure of the anteroseptal commissure were performed. Postrepair transesophageal echocardiography confirmed the satisfactory surgical correction with no residual leak. The postoperative course was uneventful.

DISCUSSION

Eustachian and thebesian valves as remnants of the sinus venosus valves are not uncommon.¹³ They rarely produce

Case Report

TABLE 1. Reported surgical cases of cor triatriatum dexter in children

Study	Age at surgery and sex	Additional malformations	Symptoms	Surgery	Outcome
Doucette and Knoblich, 1963 ¹	6 wk, M	PA, HRV, HTV, PFO, ASD	Cyanosis	Modified Potts shunt	Death after surgery
Folger, 1968 ²	9 y, F	PA, HRV, HTV PDA, ASD	Cyanosis from 3 mo	Pulmonary valvulotomy and tricuspid valvulotomy	Death after surgery
Folger, 1968 ²	5½ mo, M	Supravalvular and pulmonary valve stenosis, PDA, ASD	Cyanosis and dyspnea on exertion	ASD closure and opening of supravalvular PS	Death after surgery
Jones and Niles, 1968 ³	4 mo, M	HRV, tricuspid atresia, ASD, VSD	Cyanosis	Potts shunt at 4 mo Glenn procedure at 8 y	Death at 10 y due to obstruction of RA flow by the large membrane
Nakano et al, 1974 ⁴	7 y, F	ASD, peri-membranous VSD, HTV	Cyanosis early in life, fatigability and progressive dyspnea on severe exertion after the first year of life	Complete membrane resection Direct closure of VSD	Alive
Mazzuco et al, 1983 ⁵	5 mo, F	LSVC draining into the LA, separate draining of hepatic veins into the RA	Cyanosis	Complete membrane resection Pericardial patch reconstruction of a new interatrial septum	Alive 5 y after surgery
Kolouskova et al, 1996 ⁶	6 y, M	–	Exudative enteropathy syndrome	Complete membrane resection	Alive
Alkhulaifi et al, 1999 ⁷	12 y, M	–	Ascites	Complete membrane resection	Alive
Barrea et al, 2009 ⁸	4 mo, F	Large PFO	Cyanosis	Complete membrane resection	Alive
Galli et al, 2009 ⁹	1 mo, F	ASD, PDA	Cyanosis	Complete membrane resection and ASD closure	Alive at 16 mo after surgery
Hoye et al, 2010 ¹⁰	5 d, F	PFO, SVC stenosis	Cyanosis	Complete membrane resection, PFO closure and pericardial patch enlargement of SVC	Alive
Alghamdi, 2016 ¹¹	15 d, F	–	Cyanosis	Complete membrane resection at 15 d after unsuccessful disruption of the membrane by catheterization	Alive

(Continued)

TABLE 1. Continued

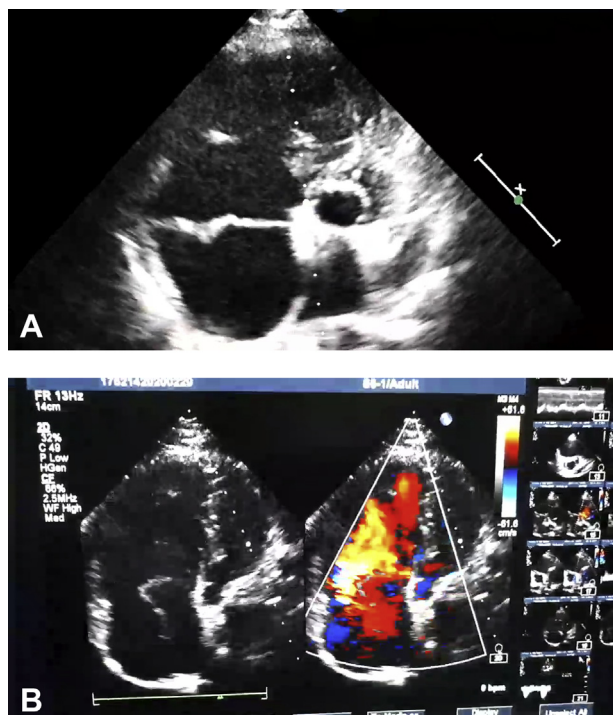
Study	Age at surgery and sex	Additional malformations	Symptoms	Surgery	Outcome
Rao et al, 2018 ¹²	10 mo, M	Large ASD, PS, mild HRV, L SVC	Cyanosis	Pulmonary balloon valvulotomy at 4 mo Complete membrane resection, ASD closure with autologous pericardium	Alive
Present case, 2020	9 y, F	Severe TR	Fatigability and dyspnea on exertion	Complete membrane resection and TV repair	Alive

M, Male; PA, pulmonary atresia; HRV, hypoplastic right ventricle; HTV, hypoplastic tricuspid valve; PFO, patent foramen ovale; ASD, atrial septal defect; F, female; PDA, patent ductus arteriosus; VSD, ventricular septal defect; RA, right atrium; L SVC, left superior vena cava; LA, left atrium; SVC, superior vena cava; PS, pulmonary stenosis; TR, tricuspid regurgitation; TV, tricuspid valve.

clinical symptoms in children without any other significant structural heart defects.^{14,15} In contrast, the septation of the RA with a membrane between its smooth and trabeculated portions may lead to subsequent malformations of the right heart structures in utero. In anatomical studies of

hypoplastic right heart structures, a prominent eustachian valve directing the abnormal fetal flow across the atrial septal defect (ASD) has been documented in up to 80% of cases, including CTD in 25% of them.¹⁶ However, it cannot clearly be determined whether this abnormal fetal flow due to the persistent presence of the RA remnants promotes the genesis of hypoplastic right heart structures or vice versa the presence of hypoplastic right heart structures potentially contributes to the persistence of these RA remnants.

Based on the reported cases presented in Table 1, the time of onset and the severity of the various clinical manifestations depend primarily on the following 6 factors in children. (1) The size of the sinoatrial orifice(s), the sinus portion of the RA receiving the superior, and inferior venae cavae blood flow return. The size of this orifice determines



VIDEO 1. Preoperative 2-dimensional transthoracic echocardiography demonstrating the presence of a membrane separating the right atrium into 2 parts that was protruding into the right ventricle through the tricuspid orifice during diastole. The septal tricuspid leaflet is thickened and immobile (A). Severe central tricuspid insufficiency during systole with color Doppler (B). Video available at: [https://www.jtcvs.org/article/S2666-2507\(20\)30399-0/fulltext](https://www.jtcvs.org/article/S2666-2507(20)30399-0/fulltext).

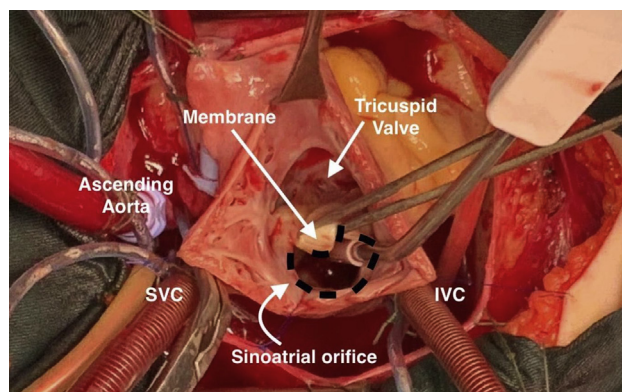


FIGURE 1. Operative photograph of cor triatriatum dexter through an oblique right atriotomy. The dotted black circle between the membrane and the right lateral wall of the RA represents the sinoatrial orifice, which connects the smooth sinus part to the trabeculated part of the RA. The sinus part receives blood flow from the SVC, IVC, and coronary sinus and the trabeculated part contains the TV and the right appendage. SVC, Superior vena cava; IVC, inferior vena cava.

Case Report

the degree of blood flow obstruction from the smooth sinus part of the RA toward its trabeculated part, which contains the TV. (2) The presence of an associated ASD, its size determining the quantity of right-to-left shunting in correlation with the degree of obstruction of the sinoatrial orifice(s).^{1-5,8-10,12} (3) The presence of associated RV and TV hypoplasia resulting in limited RV compliance and therefore increasing right-to-left shunting.^{1-3,12} (4) The presence of functional TV obstruction created by the protrusion of the membrane through the tricuspid orifice during diastole^{4,8,9,12} or the presence of TV insufficiency due to fibrosis and deformation induced by the repetitive traumatic effect of the membrane on the TV leaflets, as in our case. (5) The presence of associated right ventricular outflow tract obstruction at different levels.^{2,12,17} (6) Predominant obstruction of inferior vena cava flow by the RA membrane with no associated ASD.^{6,7}

Eleven of the 14 pediatric cases reported in the literature presented with cyanosis early in life due to the presence of obstructive sinoatrial orifice(s) and an associated ASD of varying sizes.^{1-5,8-12} Two of these 14 cases also presented with Budd–Chiari syndrome with exudative enteropathy in one case⁶ and ascites in the other⁷ due to obstruction of the inferior vena cava flow by the RA membrane, in the context of an intact interatrial septum. As a sole symptom, progressive fatigue and dyspnea on exertion is consistent with associated TV dysfunction in the context of CTD and can contribute to its incidental diagnosis by echocardiography, especially in cases of unobstructive sinoatrial orifice(s) and no associated ASD, as in our case. Children with unobstructed sinoatrial orifice(s) are usually asymptomatic and generally do not need any treatment of their CTD unless they would undergo cardiac surgery or percutaneous interventions for other reasons.

Eight of 11 cases that presented with cyanosis early in life were operated on during the first 6 months after birth^{1-3,5,8-11} and the other 3 cases at the ages of 10 months,¹² 7 years,⁴ and 9 years.² In cases before 1980, the diagnosis was often missed and either revealed during or after surgery at postmortem examination,¹⁻⁴ although clinical and especially cardiac catheterization findings, in retrospect, were suggestive of CTD.^{4,5} Three of the 5 cases of this early period, with cyanosis after birth and a missed preoperative diagnosis of CTD, were operated on during the first 6 months of life. Two of the patients died just after surgery^{1,2} and the other patient 10 years later due to the obstructive membrane.³ The other 2 cases^{2,4} of this early period were operated on at a relatively advanced age despite the early onset of cyanosis after birth. One of them died after surgery due again to the missed prompt diagnosis of CTD² and the other one survived thanks to the resection of the membrane, which was incidentally discovered during surgery.⁴ After 1980, the reported 9 cases, including ours, survived thanks to the complete resection of the membrane at the time of surgery.⁴⁻¹²

In the last 6 cases including ours, which were reported after 2009, accurate preoperative diagnosis of CTD relied entirely on TTE performance.⁸⁻¹² Nowadays, cardiac magnetic resonance imaging may be very helpful in the diagnostic assessment of CTD, as an additional valuable tool, to delineate the membrane and assess better right ventricular volume and function.¹²

Although percutaneous catheter disruption of the obstructive membrane has been suggested as an alternative to surgical resection, this is not always technically feasible or possible.¹⁸ For example, Alghamdi¹¹ reported a case of unsuccessful disruption that required surgical resection 1 week later. On the contrary, percutaneous ASD closure can be an alternative treatment to surgery in unobstructive CTD cases.¹⁹

In conclusion, CTD with associated ASD must be considered as a cause of persistent hypoxia after birth in newborns and infants and a rare cause of exercise-induced hypoxia later in life. Budd–Chiari syndrome in childhood can in exceptional cases also be a consequence of CTD. Although percutaneous catheter disruption of the membrane has recently been reported, surgical resection of the RA and excision of the membrane still remains the preferred treatment for symptomatic patients.

References

1. Doucette J, Knoblich R. Persistent right valve of the sinus venosus. So-called cor triatriatum dexter: review of the literature and report of a case. *Arch Pathol.* 1963; 75:105-12.
2. Folger GM. Supravalvular tricuspid stenosis. *Am J Cardiol.* 1968;21:81-7.
3. Jones RN, Niles NR. Spinnaker formation of sinus venosus valve. *Circulation.* 1968;38:468-73.
4. Nakano S, Kawashima Y, Miyamoto T, Kitamura S, Manabe H. Supravalvular tricuspid stenosis resulting from persistent right sinus venosus valve. *Ann Thorac Surg.* 1974;17:591-5.
5. Mazzucco A, Bortolotti U, Gallucci V, Del Torso S, Pellegrino P. Successful repair of symptomatic cor triatriatum dexter in infancy. *J Thorac Cardiovasc Surg.* 1983;85:140-5.
6. Kolouskova S, Lebl J, Snajderova M, Zemkova D, Hrobonova V, Honek T, et al. Growth in children with the exudative enteropathy syndrome due to a congenital heart defect—cor triatriatum dexter. *Cas Lek Cesk.* 1996;135: 59-61.
7. Alkhulaifi AM, Serraf A, Planche C. Ascites and weight loss in a child: due to congenital division of the right atrium. *Cardiol Young.* 1999;9:335-7.
8. Barrea C, Rubay J, Wagner K, Ovaert C. Cor triatriatum dexter mimicking Ebstein disease. *Circulation.* 2009;120:e86-8.
9. Galli MA, Galletti L, Schena F, Salvini L, Mosca F, Danzi GB. A rare case of neonatal cyanosis due to “cor triatriatum dexter” and a review of the literature. *J Cardiovasc Med.* 2009;10:535-8.
10. Hoye DJ, Wilson EC, Fyfe DA, Guzzetta NA. Cor triatriatum dexter: a rare cause of neonatal cyanosis. *Anesth Analg.* 2010;110:716-8.
11. Alghamdi MH. Cor triatriatum dexter: a rare cause of cyanosis during neonatal period. *Ann Pediatr Cardiol.* 2016;9:46-8.
12. Rao S, Suntharos P, Najm H, Komarlu R. Cor triatriatum dexter with right ventricular hypoplasia: role of multimodality imaging in decision making. *Echocardiography.* 2018;35:2113-6.
13. Chiari H. Über Netzbildungen in rechten Vorhofedes Herzens. *Beit Path Anat.* 1897;22:1-10.
14. Sehra R, Ensing G, Hurwitz R. Persistent Eustachian valve in infants: course and management in symptomatic patients. *Pediatr Cardiol.* 1998;19:221-4.
15. Martinez-Quintana E, Rodriguez-Gonzalez F. Focusing on cor triatriatum dexter and atrial septal defects. *Tex Heart Inst J.* 2014;41:567-8.

16. Schutte D, Rowland D, Allen H, Schutte D, Rowland D, Allen H, et al. Prominent venous valves in hypoplastic right hearts. Prominent venous valves in hypoplastic right hearts. *Am Heart J.* 1997;134:527-31.
17. Haboub M, Drighil A. Successful balloon valvuloplasty of a subpulmonic membrane associated with cor triatriatum dexter: a case report. *J Med Case Rep.* 2019; 13:291.
18. Savas V, Samyn J, Schreiber TL, Hauser A, O'Neil WW. Cor triatriatum dexter: recognition and percutaneous transluminal correction. *Catheter Cardiovasc Diagn.* 1991;23:183-6.
19. Eckersley LG, Clements B, Shipton S. Exercise-induced hypoxia secondary to an atrial septal defect and cor triatriatum dexter. *Cardiol Young.* 2016; 26:793-5.